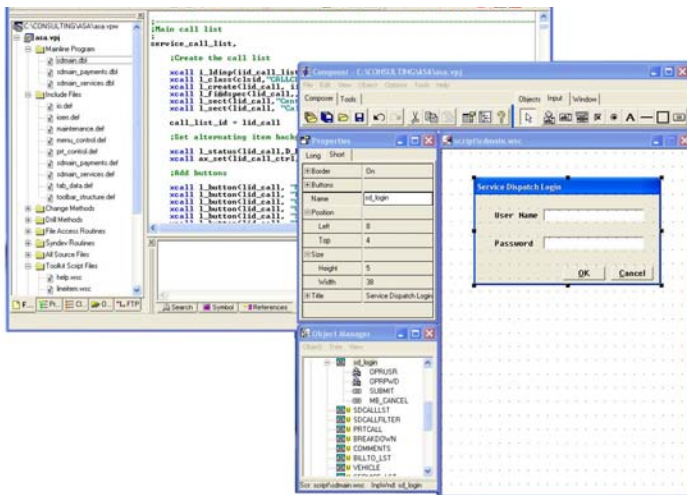


Synergy/DE Professional Series™
Workbench™

Development Tools for Creating Powerful, Portable Business Applications

Increase developer productivity. Deliver sophisticated applications to the ever-changing marketplace.

Professional Series Workbench is a comprehensive development environment that enables you to create sustainable, platform-independent business applications for deployment into distributed environments including the Internet. By providing intuitive, integrated access to a variety of proven, feature-rich development tools, and by automating routine development tasks, Workbench simplifies development efforts, reducing the time required to get your applications to market or to your users.



▶ CHALLENGE

Create sustainable business applications for deployment into distributed environments.

▶ SOLUTION

Use Professional Series Workbench to develop advanced, scalable business applications.

▶ BENEFIT

Develop sophisticated applications that you can quickly get to market or to your users and easily port to new environments as the marketplace evolves.

PRODUCT HIGHLIGHTS

- **Intuitive visual editor** simplifies programming tasks with features such as Context Tagging™, Synergy Language sensitivity, aliases, and code templates.
- **Proven core development tools** provide advanced development capabilities and enable you to create scalable, portable business applications.
- **Tool integration** facilitates a productive development process by enabling you to easily launch, use, and switch seamlessly between the development tools.
- Access to popular **RDBMSs** and to **Synergy DBMS** databases from third-party **ODBC**-enabled applications enables reliable high-performance access to business data (requires Synergy/DE Connectivity Series).
- Access to Synergy logic and data from **Microsoft .NET**, **Java**, **Visual Basic**, **Active Server Pages**, and other applications enables Synergy applications to take advantage of a distributed architecture (requires Synergy/DE xSeries).
- **Easy customization** of all aspects of your development environment gives you the flexibility to configure your environment to meet your needs.
- **Time-saving project management tools** eliminate duplication of work and reduce maintenance time.

INCREASE DEVELOPER PRODUCTIVITY

Proven development tools and project management features enable developers to spend less time writing and debugging, ensure standard coding practices, and collaboratively speed applications to completion.

CREATE HIGH-PERFORMANCE APPLICATIONS FOR WINDOWS, UNIX (INCLUDING LINUX), OR OPENVMS

With a powerful business-oriented language at its core, advanced tools for user interface design, a proven database management system, and support for open integration technologies, Workbench enables developers to build open, sustainable solutions.

INCREASE DEVELOPER PRODUCTIVITY

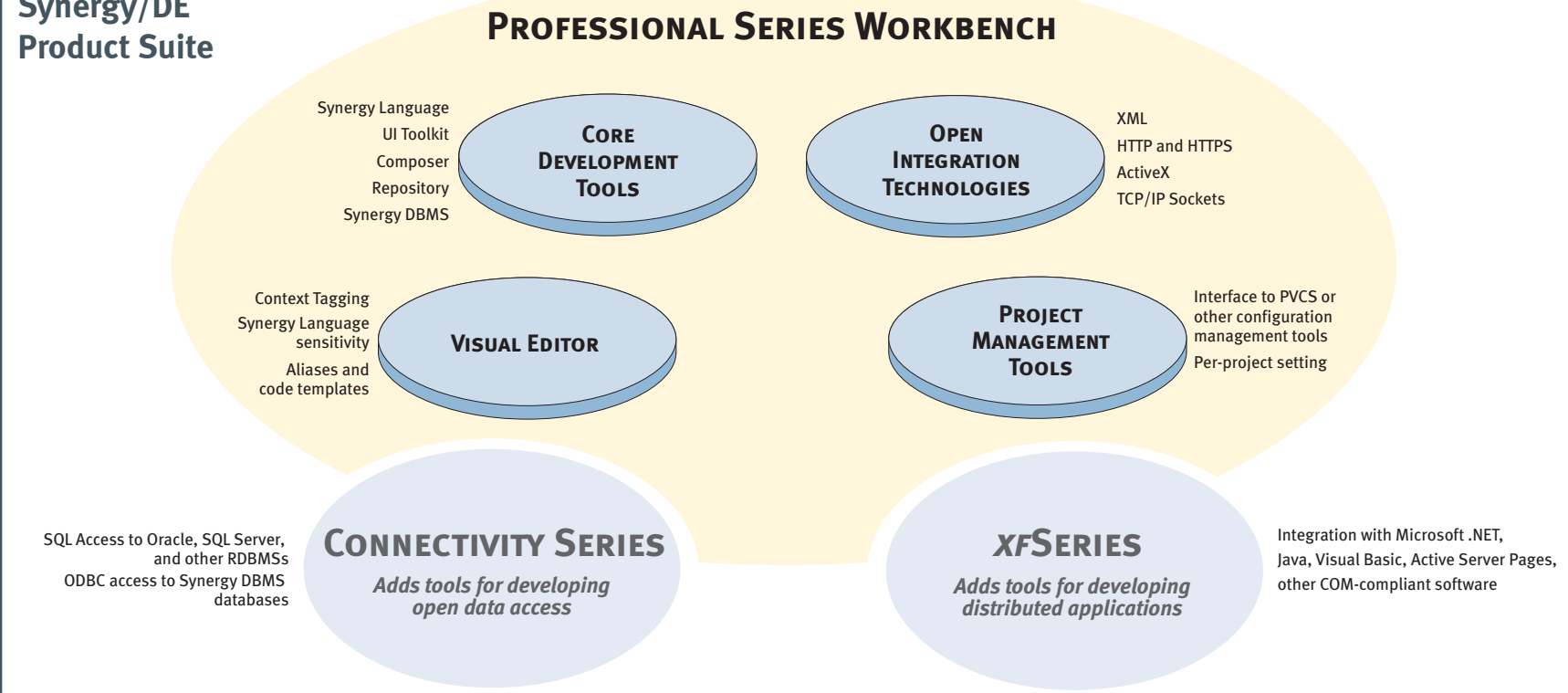
The productivity-enhancing capabilities of Workbench enable you to spend less time writing and debugging, help to ensure standard coding practices, and speed your applications to market.

Advanced Development Tools Empower

Developers. From within Workbench, you have easy access to a full range of advanced development tools. You can maintain data definitions with Repository, create high-speed databases with Synergy DBMS, use Composer and UI Toolkit to build sophisticated user interfaces, and express complex solutions quickly in straightforward, logical code with Synergy Language. And Workbench's intuitive, fully customizable language-sensitive editor provides a number of code-automating features. All of these tools work together, allowing you to circumvent time-consuming errors and devote your time to the creative development of high-quality applications. In addition, because the learning curve is relatively short, developers new to Workbench can quickly become effective, further reducing your time to market.

Project Management Features Increase Efficiency.

Features like per-project settings and centralized data definitions and libraries enable teams to work together efficiently. The ability to interface with popular version control systems, such as Merant PVCS, facilitates concurrent and parallel development with less risk and reduces common team coordination errors.

**Synergy/DE
Product Suite****PRODUCT OVERVIEW**

Professional Series Workbench provides Synergy developers with the ultimate development environment for creating powerful multi-platform business applications. From an intuitive interface, you can access a comprehensive set of proven tools that support rapid application development. You can then utilize Connectivity Series and xSeries products to provide open integration with a variety of industry standard applications, services, and data. Features of Workbench include

AN INTUITIVE VISUAL EDITOR: The Synergy Language-sensitive editor simplifies programming tasks with features such as

- **Context Tagging:** Workbench enables you to get context-sensitive help and to quickly go to the source for a routine by clicking on the routine name.
- **Synergy Language sensitivity:** Synergy Language syntax is automatically color-coded, completed, and indented as you type.
- **Aliases and code templates:** Common UI Toolkit code segments and method routines are generated directly into your program. And you can create your own aliases and templates for code frequently used in your applications.

PROVEN CORE DEVELOPMENT TOOLS: Workbench includes a comprehensive set of feature-rich core development tools. These tools include

- **Synergy Language,** a high-level business programming language that encourages structured, system-independent, modular code.
- **UI Toolkit,** a library of routines and utility programs that enable you to create sophisticated windowed user interfaces.
- **Composer,** an interactive user-interface design tool, with which you can “draw” windows and then graphically assign properties.
- **Repository,** a data management tool that allows you to manage your data definitions, and the business rules that apply to your data, in one centralized location.
- **Synergy DBMS,** a fast and efficient system-independent database system that scales to thousands of users.

TOOL INTEGRATION: The integration of Workbench's development tools facilitates a productive development process by enabling you to easily launch, use, and switch seamlessly between the tools as needed. From Workbench, you can automatically generate code for UI Toolkit input field methods, compile Window script files (with Composer), compile and debug source code, prototype applications, view Repository information while editing source code, and perform many other tasks that require communication between development tools.

OPEN INTEGRATION TECHNOLOGIES: Developers using Workbench have the latest technologies and capabilities at their disposal, enabling the creation of open, competitive solutions. Synergy Language provides

- An **XML API**, which allows you to parse and assemble XML documents.
- **HTTP and HTTPS** support, enabling you to send documents via HTTP, including secure communications via Secure Sockets Layer (SSL) technology.
- **ActiveX** support, which enables you to extend your applications with a wide variety of capabilities, including many interactive and multimedia effects.
- Access to popular **RDBMSs** such as **Oracle** and **SQL Server**, and to **Synergy DBMS** databases from third-party **ODBC**-enabled applications (requires Synergy/DE Connectivity Series).
- Access to Synergy logic and data from **Microsoft .NET**, **Java**, **Visual Basic**, **Active Server Pages**, and other **COM**-compliant applications (requires Synergy/DE xSeries).

EASY CUSTOMIZATION: With Workbench, you can customize all aspects of your application development. You can

- Customize the commands for compiling, building, debugging, and executing on a per-project basis or on a global level.
- Create any number of tools to perform any desired commands.
- Add or remove buttons from any toolbar or create new custom toolbars.

TIMESAIVING PROJECT MANAGEMENT TOOLS: Create project files to more easily define file tags, restore edit sessions, compile from the editor, customize builds, and manage version control. Also define environment variables, configure initialization commands, and set file filters to group similar files based on file extension on a per-project basis. Interface with one of several popular version control systems, including PVCS® and Microsoft® Visual SourceSafe®.

CREATE HIGH-PERFORMANCE APPLICATIONS FOR WINDOWS, UNIX, OR OPENVMS

Workbench provides all the tools you require to build powerful applications that are competitive in your market. With Workbench, you can develop on Windows for source code on Windows, Unix, or OpenVMS.

Powerful Language Provides Solid Foundation.

The fundamental component of Synergy/DE, Synergy Language enables developers to easily develop, maintain, and extend complex, high-performance applications. These applications can scale to thousands of users and are portable across multiple Windows, Unix, and OpenVMS platforms.

Advanced User Interface Tools Give Applications

a Sophisticated Look and Feel. With Composer, you can create the elements of your interface graphically and then easily move, resize, and change the characteristics of your interface objects. And UI Toolkit will ensure consistency within your applications, providing pre-written code for the user interface portions of your software.

Proven Synergy DBMS Database System Is Fast

and Reliable. Built into the Synergy Language, Synergy DBMS provides Synergy applications with fast, reliable, proven data storage and access capabilities, and includes a number of high-powered utilities for monitoring and managing the files in your environment.

Latest Technologies Enable Open Integration

Capabilities. Numerous technologies enable you to build open solutions that interact with other industry-standard applications, services, and data. Supported technologies include XML, HTTP and HTTPS, ActiveX, TCP/IP Sockets, Microsoft .NET, Java, Visual Basic, Active Server Pages, COM, SQL, and ODBC.

“We really like Workbench — and we have only scratched the surface of its capabilities.”

- Gary Surma, Monette Information Systems

“It is easy to integrate third-party applications, such as the PVCS Version Manager software, into Workbench.... Our previous development tool didn’t have the functionality of Professional Series Workbench.... our development time is dramatically reduced.”

- Richard Barndt, Computers Unlimited

“I love the integration to the Synergy compiler and Composer in Workbench. It’s so easy to get around while using Workbench, and I love the pop-ups for routines.”

- Bob Woodrow, CareCentric, Inc.

“The Synergy/DE Professional Series Workbench will be a life saver for me.... I foresee Workbench increasing my productivity by at least threefold.”

Stephanie Sadler, Georgia Software Corporation

ABOUT SYNERGEX AND SYNERGY/DE

Synergex, with more than 28 years of experience in cross-platform application delivery, specializes in providing integrated enterprise solutions. Our Synergy/DE development tools enable developers to productively build business suites that can seamlessly integrate with third-party applications and data and efficiently deploy into distributed environments, including the Internet. With a substantial presence in a multitude of vertical industries, Synergy/DE has a long track record backed by millions of end users worldwide.

Synergex offers both professional services and training to speed up your implementation process. The Synergex Professional Services Group can step into a project at any phase—conception through operation—and work with your team to define and/or successfully meet your specific project requirements. Visit www.synergex.com for comprehensive information on all of our projects and services.

Supported Platforms

Professional Series Workbench runs on Windows and supports source files on Windows, Unix, or OpenVMS. If your target is Unix or OpenVMS, you can edit your code with Workbench and then move it to your target system for building, running, and debugging. Alternatively, you can update and configure your application to also operate on Windows and then build, run, and debug with Workbench before moving your code to your target system. (Note: We recommend that you rebuild on your target platform. If, however, your target is an Intel-compatible [little-endian] Unix system, you may not need to rebuild, as your Windows-built application could run on your Unix system.) If you prefer to develop your applications on Unix or OpenVMS systems, you can use the Professional Series Development Environment (PSDE) instead of Workbench. PSDE includes the core development tools described in this datasheet.

